



Series KGS080

EBAA-WEDGE™
Adjustable Flange Deflection Filler Gasket

Installation Instructions

1. The adjustable EBAA-Wedge consists of two halves with a 4° integrally molded sealing face connected to one another by an internal groove. They are shipped pre-assembled.

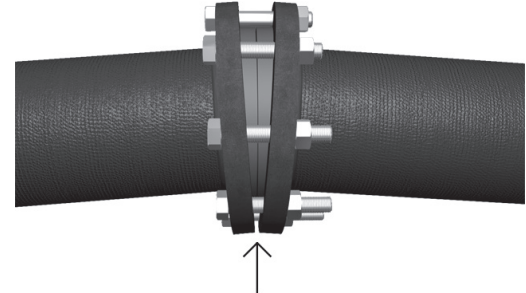
Due to the meshed grooved ring connection the EBAA-Wedge can be easily turned toward one another for a maximum deflection of 8°.

2. The sealing faces of the EBAA-Wedge should be adjusted to the same angle of deflection of the two flange faces you wish to connect by turning the two halves of the gasket.

3. Insert the properly adjusted gasket between the flange faces verifying the angle of the gasket matches that of the flanges. Correct gasket angle as necessary.

4. Centering the gasket is accomplished by the insertion of the flange bolts. At higher gasket angles, longer bolts may be required. See table of maximum bolt lengths on the front of the brochure. Full thread machine bolts are recommended to assure proper seal.

5. Tighten the flange bolts finger tight, starting in the area where there is minimal distance between the flanges. Once all bolts are finger tight, tighten the bolts in a clockwise direction, not crosswise starting from the area with the narrowest distance between the two flanges as before. Torque all flange bolts to the value listed in the adjacent table. A torque-indicating wrench can facilitate this procedure. Excessive tightening can destroy the gasket.



Start at Narrow Part of Gasket

CONTENTS

Qty. Description

1 8 in. EBAA-WEDGE

Restraints Made in The USA

0412-D

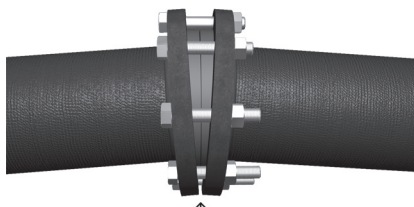
For use on water or wastewater pipelines subject to hydrostatic pressure and tested in accordance with either AWWA C600 or ASTM D2774

APPROXIMATE SHIPPING WEIGHT: 2.10 lbs.

Copyright 2018 © EBAA IRON, Inc. All Rights Reserved

Series KGS080

EBAA-WEDGE™
Adjustable Flange Deflection Filler Gasket



Start at Narrow Part of Gasket



K G S 0 8 0

EBAA IRON SALES, Inc.

P.O. Box 857, Eastland, TX 76448

Tel: (254) 629-1731

Fax: (254) 629-8931

Toll: (800) 433-1716

contact@ebaa.com

www.ebaa.com

Made in the USA